

Waxman Group Ltd.
Grove Mills
Elland
West Yorkshire
HX5 9DZ
England
Tel: +44 (0) 1422 371811
Web: www.waxmangroup.co.uk

Waxman Group
Over 50 Years in Distribution

Waxman Group

3

- About Us
- Chairman’s Statement
- Company Timeline

Waxman Fibres

4

- Retardant Fibres & Technical Textile Solutions
- Protex
- The Team

Waxman Ceramics

8

- Introduction
- Retail Distribution
- Housebuilders & Developers
- Swimming Pool Specialists

Protal

5

- Introduction
- Patented Advanced Technology
- A New Force in Protective Clothing

Waxman Ceramics
Architectural Tiles

9

- Introduction
- CPD Seminars
- Lunch & Learn
- Architectural Tile Showroom

Waxman International

6

- Specialist Distributor of Faux Fur Fibres
- Home Furnishings
- Fashion

Waxman Energy

10

- Introduction
- Products
- Product Training
- Interactive Website

Waxman Speciality Products

7

- Fibres, Filaments & Yarns
- SO Products
- Our Mission

Waxman Training Academy

11

- Introduction
- Facilities
- Courses

CONTENTS

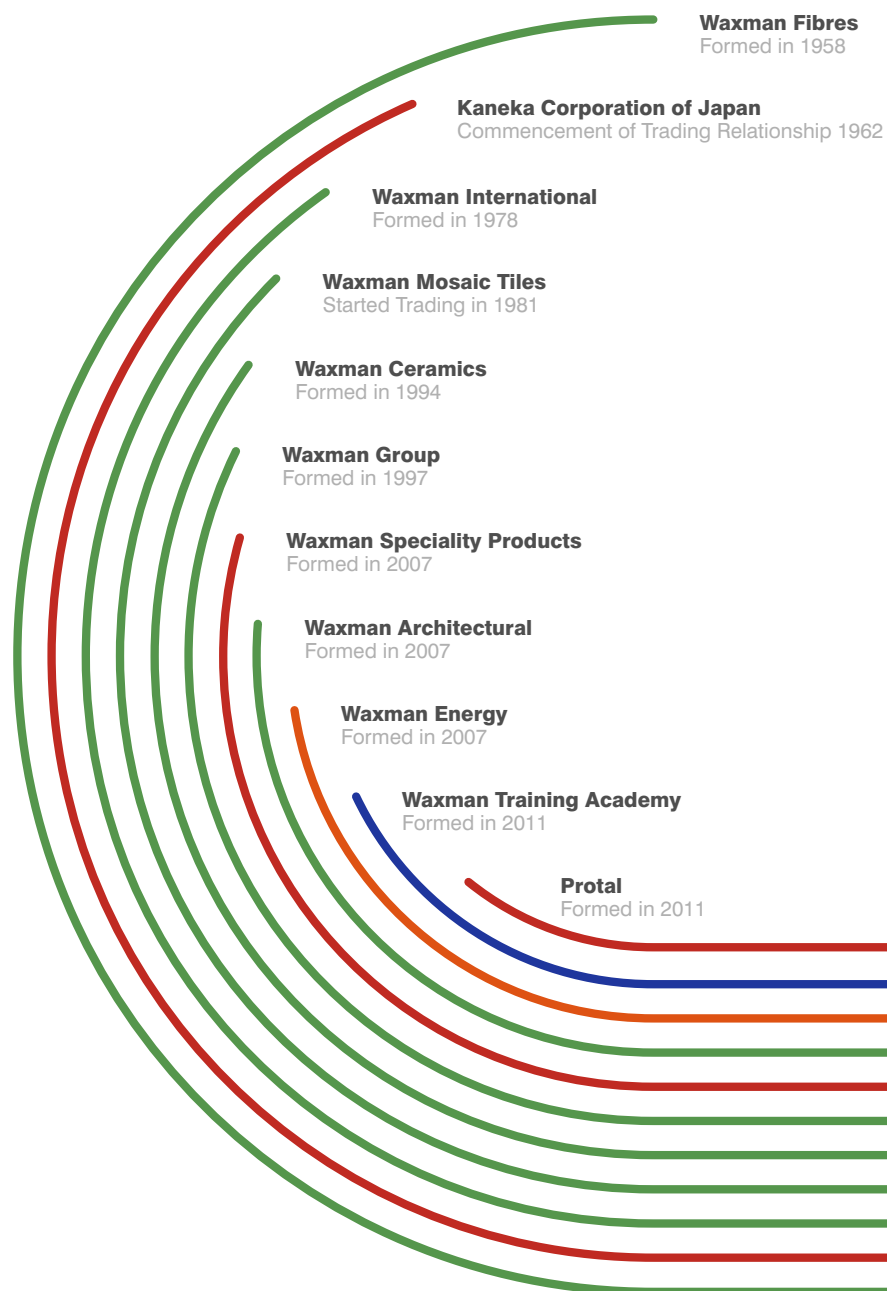


Waxman Group

ABOUT US

The Waxman story began in 1958 as a synthetic fibre company based in West Yorkshire. Today, over 50 years later, fibres are still an integral part of our business and we are one of the leading global suppliers of flame retardant fibres used primarily in protective clothing.

We have used the knowledge gained from distribution to diversify into other worldwide markets and products. The Waxman Group now consists of eight companies within three key divisions: Fibres, Ceramic Tiles and Renewable Energy.



Richard Waxman

Chairman's Statement

It is a pleasure to introduce the Waxman Group as we celebrate over 50 years in the distribution industry. As a third generation family company, we have developed our business on our commitment to building and maintaining strong and lasting relationships with all of our partners. This philosophy is at the heart of Waxman and has led us from the distribution of flame retardant fibres, ceramic tiles and renewable energy technologies including battery storage and EV chargers.

Central to all these business operations is our continued commitment to first class customer service and support. We believe in conducting our business with integrity and have built up a high degree of trust with both suppliers and customers. Selective global partnerships mean that we are able to offer quality product ranges and with over 50 years of distribution expertise is what sets us apart from other distributors.





SPECIALIST DISTRIBUTOR OF FLAME RETARDANT FIBRES AND TECHNICAL TEXTILE SOLUTIONS

The Waxman story began over 50 years ago as a synthetic fibre merchanting company. Today, we are one of the leading global distributors of a range of technical textile fibres produced by Kaneka Corporation of Japan. Our primary product is Protex – an inherently flame-retardant fibre – used in upholstery, drapery, bedding, mattress ticking and workwear fabrics

PROTEX

Protex is a special modacrylic fibre that is manufactured with inherent flame retardant properties that will not deteriorate or diminish.

Built to last, garments manufactured using these fibers are able to keep their high-quality performance right to the end of their life cycle - even after repeated laundering (including industrial), dry or spot-cleaning.

Expertly blended with a combination of cellulosic fibres (such as cotton and viscose), Protex is suited to a wide range of applications from workwear to home furnishings and even high fashion garments where flame retardant properties are a priority.

THE TEAM

The Waxman team has a high level of technical expertise and knowledge of the diverse international flammability standards required to operate in the global textile markets of today. We have a great relationship with our suppliers across the world and only work with the most trusted manufacturers in our field.



info@waxmanfibres.co.uk
www.waxmanfibres.co.uk
+44 (0) 1422 310600



For over 20 years, Waxman has pioneered the development of inherently flame retardant protective workwear - offering the most comfortable and cost-effective garment solutions for flame retardant and multi-hazard PPE (personal protective equipment).

Utilising a unique patented blend of Protex (modacrylic) fibers from Kaneka Corporation of Japan, cotton and other technical fibers, Protal fabrics are used to produce knitted and woven garments that are worn daily by hundreds of thousands of end users worldwide from oil and gas to utility and the military.

PATENTED ADVANCED TECHNOLOGY

Offering exceptional performance, especially for electric arc protection, Protex fibre is the only modacrylic which has been specifically designed for PPE use and is Oeko-tex compliant and REACH ready.

Protal garments are manufactured to last, keeping their high-quality performance right to the end of their life cycle - even after repeated laundering (including industrial), dry or spot-cleaning.

Manufactured with inherent flame retardant properties that will not deteriorate or diminish, the need for costly re-treatment and unpleasant odours are eliminated. This unique combination gives Protal the edge in terms of practical comfort and safety.

A NEW FORCE IN PROTECTIVE CLOTHING

Our trusted partners use Protal to manufacture garments such as vests, long johns, socks, balaclavas, shirts, trousers, jackets – and many more - all which can be dyed to any corporate colour or high visibility colours.

Our global partners provide garments of the highest quality and safety for companies such as Shell and Chevron. Or for use in extreme climates including the intense heat found in the Middle East or in sub-zero climates experienced by NATO forces.

Protal (a registered trademark of the Waxman Group Ltd.) provides unrivalled protection and comfort for a variety of potentially hazardous applications and environments.

info@protal.co.uk
www.protal.co.uk
+44 (0) 1422 310600





Waxman International

SPECIALIST DISTRIBUTION OF FAUX FUR FIBRES

Waxman International distributes the finest quality fibres for faux fur used by millions of customers worldwide. Formed in 1978, we are proud to be the exclusive European distributor of Kanecaron modacrylic fibres, manufactured by Kaneka Corporation.

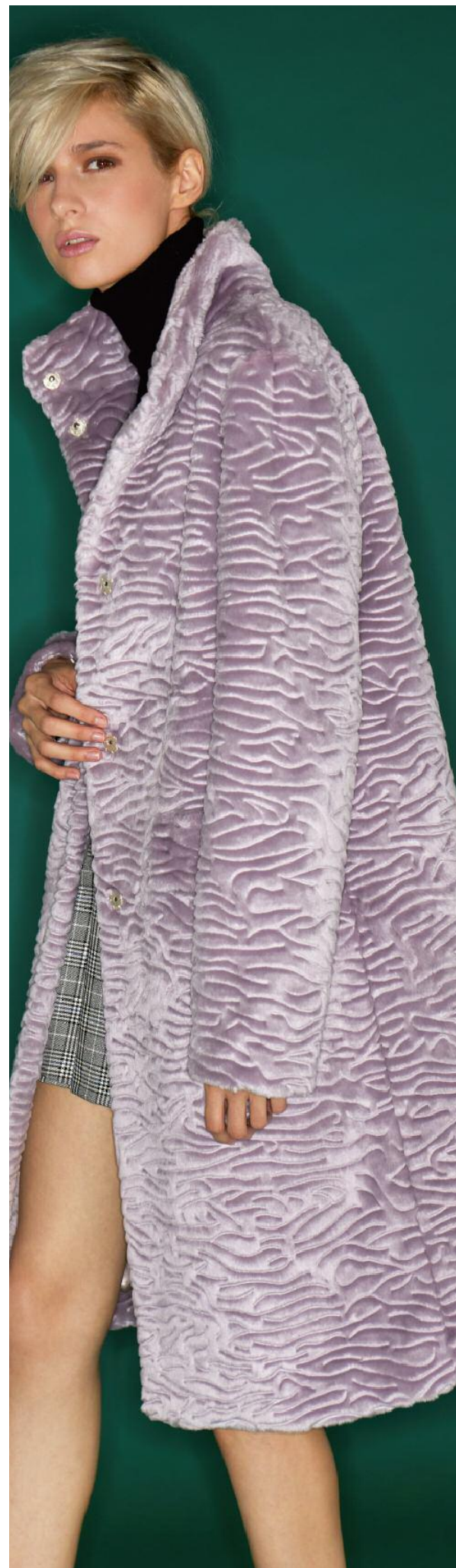
HOME FURNISHINGS

As well as resembling the look and feel of natural fur, all Kanecaron fibres are inherently flame retardant making them an ideal choice for home textile products such as throws and cushion covers, where British fire safety standards are required.

FASHION

Responding to the demands of the fashion industry, Kanecaron fibers offer a 'guilt-free' alternative to real fur by imitating the look and feel of natural mink, rabbit, fox and other types of fur found in luxury garments and accessories. With Kanecaron, the possibilities in design and styles are endless, with the added benefit of being able to create colours, textures and patterns not available in real fur.

info@waxmanint.co.uk
www.waxmaninternational.co.uk
+44 (0) 1422 310600



FIBRES, FILAMENTS AND YARNS FOR ULTIMATE HAZARD PROTECTION

Forming a key part in Waxman Group's Fibre division, Waxman Speciality Products are specialists in the distribution of Flame Retardant (FR) viscose and anti-static fibres.



Synergistic to Waxman Fibres and Protal, The SO range from Waxman Speciality Products has been developed to offer outstanding performance and protection for a variety of markets including technical textiles and industrial end uses.

SO FR Viscose fibers

SO FR Viscose is a range of new Inherent Flame Retardant fibres that are ideal for blending with Kanecaron modacrylic fibres, aramids, polyester, cotton and other cellulosic fibres.

SO Neutral (antistatic) fibers

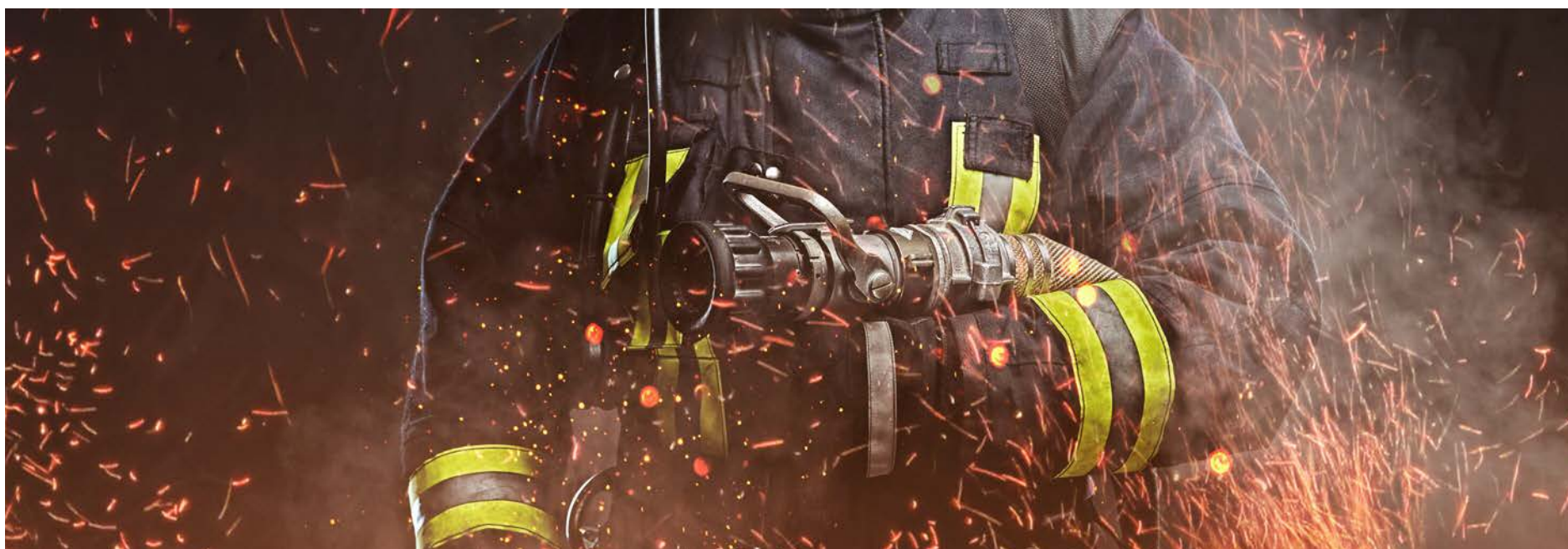
Introduced into textile and industrial applications, SO Neutral provides protection against a wide range of risks and hazards caused by static electricity in end-use situations.

OUR MISSION

Waxman Speciality Products aim to provide the most cost effective, yet technically superior fibre solutions available in the market today, offering a complete solution for those looking for all round premium quality and safety.

We have built a formidable reputation for our quality service and products over five decades and are well respected for both our distribution service and technical knowledge within the technical textiles sector.

info@waxmanspecialityproducts.co.uk
www.waxmanspecialityproducts.co.uk
+44 (0) 1422 310600





Waxman Ceramics has been supporting the construction, pool and design industries for over 30 years and have grown to become one of the largest suppliers of mosaics in the UK, as well as one of the leading distributors of large format wall and floor tiles.

Established in 1981, we supply independent and national retailers across the UK, as well as large scale projects ranging from single dwellings to complete residential developments.

RETAIL DISTRIBUTION

At the heart of the Waxman operation is unparalleled customer service, coupled with a reliable, consistent and dependable delivery network. Our comprehensive range of materials, first class sales support and high stock levels combine to provide our loyal customers with a fast and efficient national distribution service.

We pride ourselves on offering first rate merchandising advice and support for showrooms and provide display settings, stands and boards to showcase our unique range of material.

Our highly experienced sales team and sales office are available to offer guidance and support to ensure your project runs smoothly, with information on pricing and availability always to hand.

HOUSE BUILDERS & DEVELOPERS

With specific ranges suited to new build developments, Waxman are able to cater to the demanding needs of housebuilders - we are committed to holding a large variety of stock on site, therefore ensuring a prompt and efficient delivery service.



Waxman Ceramics Tile Collection Brochure

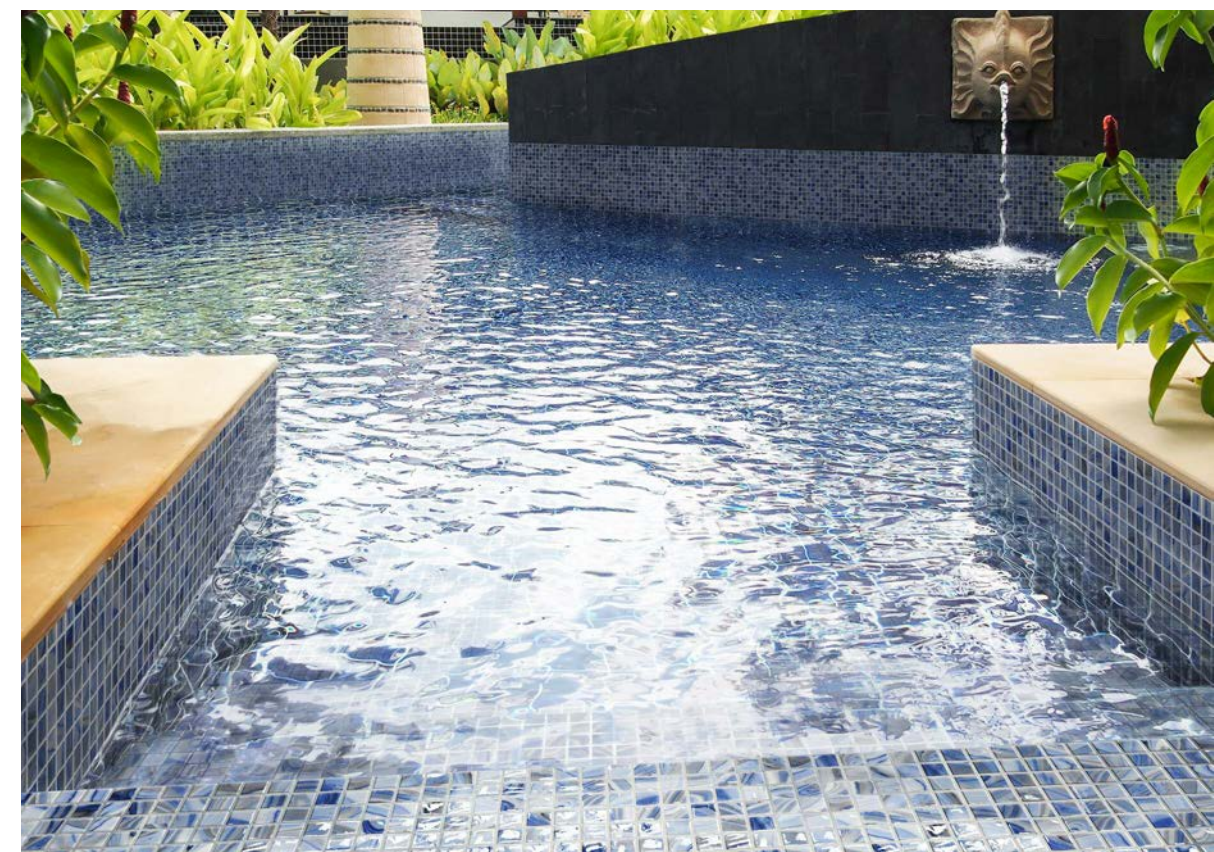
To request a copy please contact us on
+44 (0) 1422 311331



SWIMMING POOL SPECIALISTS

Waxman has been a leading supplier to the swimming pool industry since it began importing mosaics from Japan in the early eighties.

Today, Waxman Ceramics offers a diverse range of materials for all swimming pool, spa and sauna environments including coping pieces for safety and performance and a large range of anti-slip tiles for pool surrounds.



info@waxmanceramics.co.uk
www.waxmanceramics.co.uk
+44 (0) 1422 311331



Waxman Ceramics Architectural Tiles

Waxman Ceramics Architectural Tiles provides solutions for projects that require high quality durable and reliable tiles, suited for a range of applications across the UK.

With a growing range of large format porcelain tiles suited for high traffic areas and anti-slip tiles specially suited to swimming pools, leisure centres and spas, Waxman Ceramics Architectural Tiles has the knowledge and experience to take on even the most complex projects.

From Kensington Palace to Heathrow Airport, examples of our work can be seen throughout the United Kingdom - with no project too big or too challenging.

We work closely with a wide variety of industries including; high street brands, hotel chains and sporting venues - all whom choose Waxman Ceramics Architectural Tiles as a key partner for their respective projects time after time.

We work with the most esteemed manufactures to offer only the highest quality tiles - meticulously chosen by our knowledgeable technical team.

Understanding the needs of each project is important to us and our expert sales team are always on hand to allow designers, architects and other industry professionals to receive all the knowledge and support they need to meet the demanding needs of each project.



CPD SEMINARS LUNCH & LEARN



ARCHITECTURAL TILE SHOWROOM

Alongside our brand new Architectural Collection brochure, Waxman Ceramics Architectural Tiles Showroom has been specifically designed to showcase an extensive range of architectural tiles. Available by appointment, industry professionals are invited to visit our showroom to view our latest ranges and discuss upcoming projects with our knowledgeable team.



As one of the UK's leading suppliers of commercial wall and floor tiles, we are keen to share our expert industry knowledge by offering two types of learning experiences; a RIBA accredited CPD seminar in 'Tile Types and Specifying Slip-Resistant Tiles' and 'Lunch & Learn' - a hands-on interactive learning experience aimed at architects, designers, and industry professionals.

Held in your place of work, or in our Architectural Tiles Showroom, both sessions last approximately 1 hour, with a chance to ask any questions you may have.

For more information or to book a session, please get in touch via email victoria.f@waxmanceramics.co.uk or give us a call on 01422 371811

info@waxmanarchitectural.co.uk
www.waxmanarchitectural.co.uk
+44 (0) 1422 377123



As one of the UK's largest distributors of Solar PV Modules, Battery Storage, and Electric Vehicles Chargers, Waxman Energy prides itself on sourcing only the highest quality products from some of the world's leading brands.

Our 40,000 sq ft of warehousing space enables us to hold extensive stocks on site, allowing us to offer both a reliable and fast delivery service throughout the UK.

Working with our MCS approved partner installers across both commercial and domestic installations, Waxman Energy combines extensive technical knowledge and unparalleled customer service to provide you with everything you need for your next installation.



PRODUCT TRAINING

Working alongside our key partners we offer both battery storage and EV charge point product training.



ROLEC EV PRODUCT TRAINING

As Rolec's Northern Centre of Excellence, we offer Rolec EV charge point product training. Lead by Rolec EV, attendees gain an overview of the full range of Rolec products including the SecuriCharge, WallPods and the Quantum and BasicCharge pedestals.



BATTERY STORAGE PRODUCT TRAINING

Aimed at qualified installers wishing to expand their knowledge in battery storage, Waxman Energy provide a series of battery storage training days from VARTA Storage, BYD & SolaX.

INTERACTIVE WEBSITE

Our Waxman Energy website provides everything you need for a quick and easy ordering process. Our online portal allows our trusted members access to the latest products, pricing, and availability, including a personal dashboard for easy re-ordering. We also provide an online Kit Builder which gives installers with domestic projects up to 4kW the freedom to design, choose and buy their complete system online. Alternatively, our ready-made in-roof and on-roof poly & mono PV kits are an ideal solution for new-build projects.

www.waxmanenergy.co.uk

info@waxmanenergy.co.uk
www.waxmanenergy.co.uk
+44 (0) 1422 374114

SOLAR PHOTOVOLTAIC (PV)

PV MODULES

Our range of only the highest quality poly and mono PV modules are suitable for almost any residential or commercial project - ensuring a sound investment for both you and your customers. By choice, we only work with trusted module manufacturers with a firm standing in the industry, including leading brands such as AUO, Trina Solar & Talesun.

INVERTERS

We have a wide range of Solar PV inverters and monitoring systems enabling us to match any module type and power class. From our carefully selected partners, we offer a portfolio of high performance, reliable and quality products from recognisable brands such as SolaX Power and GoodWe.

ROOF MOUNTINGS

Waxman Energy provides quality and flexible mounting systems for on-roof, in-roof, flat roof and ground mounted solar PV installations. Working with our partners Van Der Valk, Schletter and GSE, we can offer solutions for almost any kind of roof covering - providing economic and safe results for any roof size.

BATTERY STORAGE

Working hand in hand with our range of PV Modules, Waxman Energy have a commitment to providing only the most reliable battery storage solutions on the market today. In August 2017, Waxman signed an exclusivity agreement with VARTA Storage allowing us to distribute the highly sought after compact energy storage system - the VARTA pulse.

EV CHARGING

To cater to the vast demand for electric vehicles throughout the UK and Ireland, Waxman Energy is pleased to become the key Northern distributor for Rolec EV. Available to view in our newly renovated showroom, we offer a comprehensive range of electric vehicle charging pedestals, wall units, and accessories.



Waxman Training Academy is a purpose-built training centre that provides nationally recognised training courses to help businesses and individuals work towards accreditations in electrical, solid fuel and low carbon technologies.

We have close relationships with a number of nationally recognised training bodies and awarding organisations to offer only the most valued training for professionals looking to start or advance their careers in either electrical or solid fuel industries.

Regulations, guidelines and incentives are constantly changing and we make it a priority to ensure all of our courses are delivered in line with the latest industry guidelines.

FACILITIES

For us, quality is paramount, not only in the training that is offered but throughout the whole Waxman Training Academy experience.

We offer a wide range of both theory-based and practical hands-on training courses to prepare you for future installations. For our solid fuel courses, we offer a scenario based rigs to replicate installation environments and live stove models for chimney and flue installations. We also offer electrical courses which provides training on a range of EV charge points and fully functional electrical systems for both residential and commercial environments.

Including a purpose built classroom and dedicated testing area, the Training Academy ensures all candidates receive.

INTERACTIVE WEBSITE

All the latest course information, training dates or any new and upcoming courses can all be found on the brand new Waxman Training Academy website.

We also have an online chat feature which allows users to talk to our helpful team and receive advice and support across a range of devices.

For more information please see our website:

www.waxmantraining.co.uk



COURSES

Working alongside our key partners HETAS and NAPIT we offer a range of courses:



SOLID FUEL COURSES

As a recognised HETAS centre, Waxman Training Academy is able to offer a wide range of solid fuel courses ranging from the five day 'Solid Fuel +' course aimed at those wishing to start a career in solid fuels, to three day intense programs such as the H003DS for gas/plumbing/heating engineers looking to cross-skill into solid fuel installation. We also offer refresher courses which all practising installers should take every five years to help top up their knowledge and ensure work carried out adheres to the latest industry requirements.



ELECTRICAL COURSES

As a City & Guilds approved centre, we offer a range of NAPIT certified courses aimed at experienced electricians wishing to progress in key areas including; in-service inspection and testing of electrical equipment (PAT), building and wiring regulations and the installation of electric vehicle charging equipment. We are also able to offer the LOGIC certified Domestic Electrical Installer course (DEI) designed to offer a bridging course for experienced installers lacking in formal qualifications.

